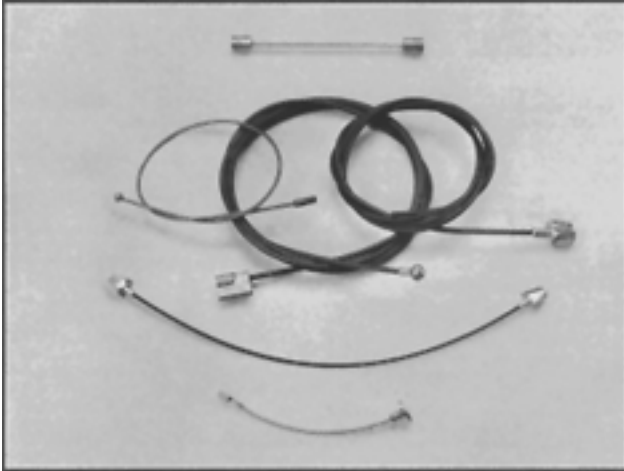


CUSTOM ZINC DIE CAST CABLE FITTINGS/ASSEMBLIES



■ ADVANTAGES OF ZINC: END FITTINGS ON CABLE ASSEMBLIES

- Holds break strength on cable
- Less expensive than swaging
- Less expensive than machined parts
- Intricate shapes and undercuts
- Elimination of secondary operations

■ TYPICAL APPLICATIONS: CABLE ASSEMBLIES

Balls, Threaded Studs, Plugs, Cylinders, Peanuts, Eyes, Forks, Stops, Single and Double Spades, Custom Fittings

■ MATERIALS:

ZAMAC 5: Most common zinc die casting alloy. Strength, ductility, and impact strength. Best for wide variety of cable assemblies uses.

- **SIZE:** Max. 1 oz.
(approx. .5 cubic")

| | | |
|---|---|-------------------------------------|
| DESIGNATION | ASTM Designation B240-64 SAE General Designation | AG41A 925 ZAMAC 5 |
| COMPOSITION | Cu Copper Al Aluminum Mg Magnesium | 0.75-1.25 3.9-4.3 0.03-0.06 |
| | Fe Iron Pb Lead Cd Cadmium | 0.075 0.004 0.003 |
| | Sn Tin Ni Nickel Zn Zinc (99.99 + % Purity) | 0.002 Remainder |
| MECHANICAL PROPERTIES | Charpy Impact Strength, ft. lb. 1/4 x 1/4-in. bar, as cast | 483 |
| | Charpy Impact Strength, after 10 yrs. indoor aging | 40 |
| | Tensile Strength psi, as cast | 47,600 |
| | Tensile Strength psi, after 10 yrs. indoor aging | 39,300 |
| | Elongation % in 2" as cast | 7 |
| | Elongation % in 2" after 10 yrs. indoor aging | 13 |
| | Expansion inches per inch after 10 yrs. indoor aging | 0.0001 |
| OTHER PROPERTIES AND CONSTANTS (AS CAST) | Brinell Hardness Compression Strength-lb/sq. in. Electrical Conductivity- Mhos./cm. cube at 20°C | 91 87,000 153,000 |
| | Melting Point-°C Melting Point-°F Modulus of Rupture-lb/sq. in. Shearing Strength-lb/sq. in. | 386.1 727.0 105,000 38,000 |
| | Solidification Point-°C Solidification Point°F Solidification Shrinkage in./ft. Specific Gravity | 380.4 716.7 0.14 6.7 |
| | Specific Head-cal/gmrc Thermal Conductivity-cal/sec./ sq. cm/cmPC at 18°C Thermal Expansion per °C | 0.10 0.26 0.0000274 |
| | Thermal Expansion per °F Transverse Deflection-in. Weight-lb/cubic inch | 0.0000152 0.16 0.24 |

AS9100 – Revision B and ISO 9001:2000



WIRE ROPE DIVISION
POMFRET, CT 06258 860-928-7981
1-800-533-LOOS (5667) FAX: 860-928-6167
Web: <http://www.loosco.com/> • E-mail: sales@loosco.com

ZINC DIE CAST CABLE ASSEMBLY END FITTINGS

Custom End Fittings To Your Specifications
 Balls / Threaded Studs / Peanuts / Eyes
 Forks / Stops / Double Spades

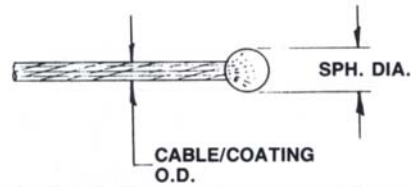
Some examples of the types of zinc die cast fittings that can be made are shown.

ZINC BALL — ZI 1

Zinc Die Casting

SPECIFICATIONS

| PART NO. | CABLE DIA. | SPH. DIA. |
|----------|------------|-----------|
| ZI 1-1 | 5/32 | .375 |
| ZI 1-2 | 3/16 | .375 |
| ZI 1-3 | 1/8 | .375 |
| ZI 1-4 | 1/8 | .312 |
| ZI 1-5 | 1/8 | .343 |
| ZI 1-6 | 1/16 | .187 |

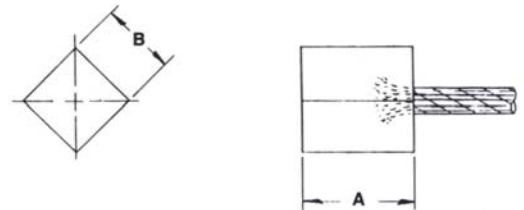


ZINC STOP — ZI 2

Zinc Die Casting

SPECIFICATIONS

| PART NO. | CABLE DIA. | A | B |
|----------|------------|------|------|
| ZI 2-3 | 1/8 | .550 | .365 |

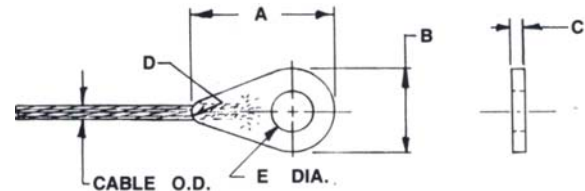


ZINC EYE TERMINAL — ZI 4

Zinc Die Casting

SPECIFICATIONS

| PART NO. | CABLE DIA. | A | B | C | D | E |
|----------|------------|------|------|------|------|------|
| ZI 4-3 | 1/16 | .625 | .375 | .109 | .093 | .199 |
| ZI 4-5 | 3/32 | .800 | .580 | .240 | .125 | .265 |

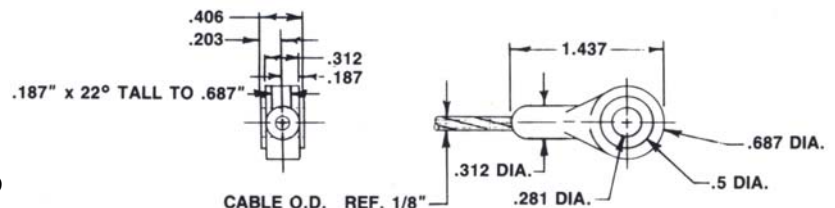


ZINC EYE TERMINAL — ZI 5

Zinc Die Casting

Don't see what you need?

We'll make custom or special cable ends to your specifications.



AS9100 – Revision B and ISO 9001:2000

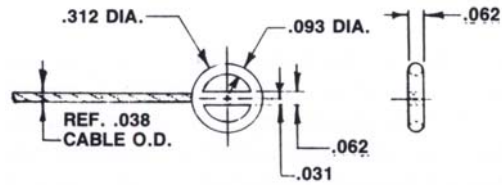


WIRE ROPE DIVISION
 POMFRET, CT 06258 860-928-7981
 1-800-533-LOOS (5667) FAX: 860-928-6167
 Web: <http://www.loosco.com/> • E-mail: sales@loosco.com

ZINC DIE CAST CABLE ASSEMBLY END FITTINGS

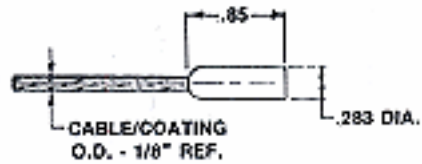
COAT HOOK — ZI 6

Zinc Die Casting



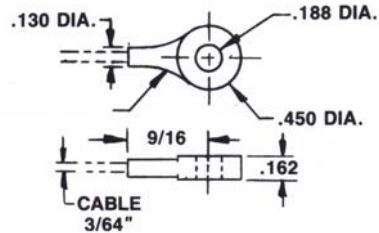
CABLE STOP ZI 9

Zinc Die Casting



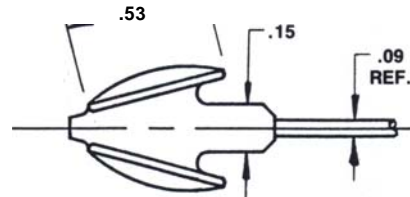
ZINC EYE TERMINAL

Zinc Die Casting



ZINC DOUBLE SPADE — ZI 21-2

Zinc Die Casting



AS9100 – Revision B and ISO 9001:2000



WIRE ROPE DIVISION
POMFRET, CT 06258 860-928-7981
1-800-533-LOOS (5667) FAX: 860-928-6167
Web: <http://www.loosco.com/> • E-mail: sales@loosco.com