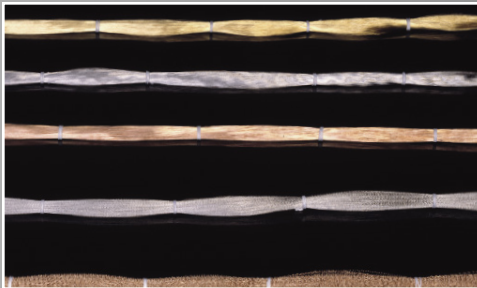


LOOS & CO. U.S.A.

JEWEL WIRE DIVISION



The Gem in Brushwire



Doing Business with us

We're only as strong as the relationships we build with our customers. For over sixty years, Jewel Wire has striven to satisfy customers with the highest quality products and diligent customer service while maintaining competitive prices – the same goal that Loos & Co., Inc. has always been committed to.

Loos & Co., Inc.'s successful business operation and reputation is built upon a reputation for integrity and excellence, careful observaton of the spirit and letter of all applicable laws, statutes and regulations; and a rigorous regard for the highest standards of conduct and personal integrity.

Who is "Jewel Wire"?

Founded in Belleville, New Jersey in 1948, Jewel Wire was acquired by Loos & Co., Inc. in 1991. It was a great fit from the start. Both family-based businesses began their operations in their respective owner's garages, and Jewel Wire was the perfect complement to Loos & Co., Inc.'s wire drawing and cable assemblies operation.

Over the years, Jewel Wire maintained its reputation of providing quality and service to its customers while the product line expanded to include High Fatigue Quality Stainless Steel, Brass, Bronze, Nickel Silver, High and Low Carbon Steel, Monel®, and Inconel®. Jewel Wire can draw wire as fine as .003"(.0762mm) and can deliver most wire crimped or straight (level), in coils, cut to length, hanks or multi-stranded.

Used in everything from miniature twisted in-wire brushes to heavy-duty industrial power brushes, Jewel Wire supplies nearly every major brush manufacturer in North America in addition to their global customer base.

“ We don't want to be the biggest, we want to be the best – to be able to provide each individual customer, no matter how small, with the best service and selection. ”
—A.W. "Gus" Loos



Products and Materials

Products

SCRATCH BRUSH WIRE | Drawn from hard wire and used in hand brushes for industrial applications. Ranging from .003" – 0.016", this wire can be manufactured from most metals or alloys. Available in cut lengths or hanks.

POWER BRUSH WIRE | Able to survive the rigors of surface conditioning with its high fatigue life. Often used in manufacturing and excellent for removal of burrs and sharp edges, greatly increasing safety. A variety of sizes and materials are available to meet all surface conditioning needs. Available in cut lengths, hanks, spools, or multi-stranded on spools.

RETAINING WIRE | Attaches brush wire filaments inside of brush channels, with a typical DIA of 0.028" – 0.125". Available in 304, 304HQ, 316 Stainless and others upon request.

Materials

BRASS | Wire is offered in Brass, specifically Alloy 260, which is comprised of 70% copper and 30% zinc. Corrosion-resistant, highly conductive and used in the manufacture of all brass brushes.

STAINLESS AND NICKEL ALLOYS | Wire is available in nearly any variety of stainless steel, including 302, 304, 305, 316, Inconel®, etc.

LOW CARBON STEEL | 0.15 carbon maximum and drawn solely from zinc-coated low carbon steel, this develops into a medium tensile, corrosion-resistant, high-quality product used in the manufacture of wire brushes.

PHOSPHOR (PHOS) BRONZE | The alloy is often Alloy 510. Comprised of 95% copper and 5% tin, it's highly conductive, has great fatigue life and low elastic modulus. Corrosion resistance and high tensile strength make this an excellent choice for wire brushes.

CRIMPED WIRE | Crimping increases column strength, improving brush performance and making it suitable for the toughest jobs. Available in nearly any metal or alloy; in cut lengths, hanks, spools, or multi-stranded on spools.

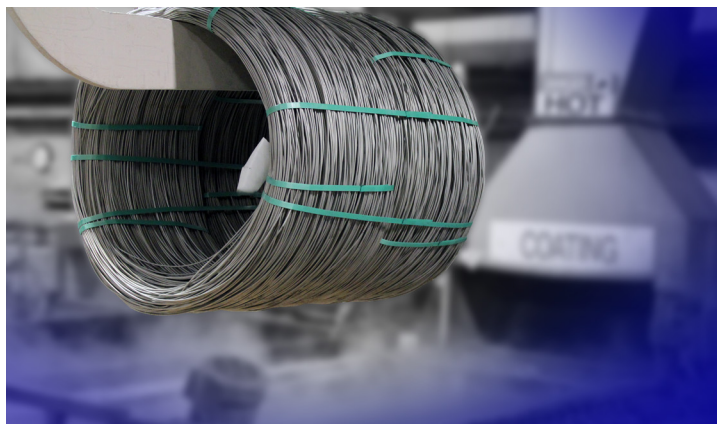
STRANDED WIRE | Large sets of wires grouped together before being put up on spools are offered in sizes from .003" – .020" and arrangements with as little as two and as many as 1,400 wires.

WINDING WIRE | Used to attach bristles to a handle; available in many sizes and materials, on spools or coils.

STRAIGHT & CUT LENGTHS | Available in a large range of sizes and alloys. Straightened and cut to a specific length or wire hanks.

HIGH CARBON STEEL | Carbon C1071 produces high tensile, high-quality and high fatigue brush material.

NICKEL SILVER | NiAg 745 is a commonly used white alloy made of 10% nickel, 65% copper and 25% zinc. Increased corrosion resistance and tensile strengths are indicative of the nickel content. Often used as brush fill and in staples.





P.O. Box 98
Pomfret, CT 06258

Tel.: 860-928-7981
Fax: 860-928-6167
sales@loosco.com

www.loosco.com